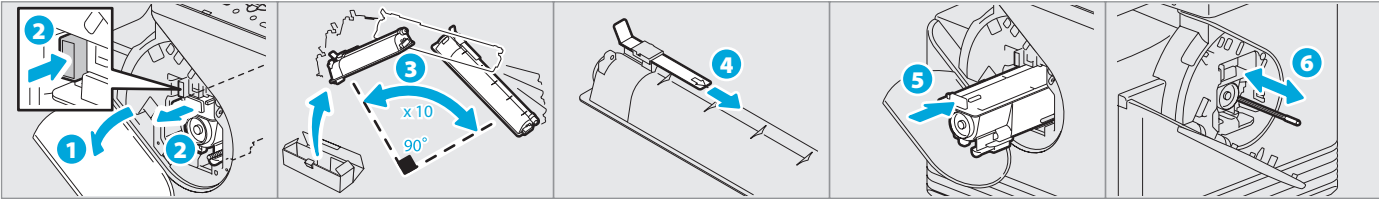


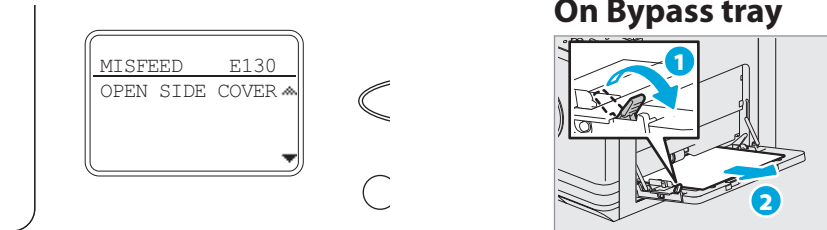
Toner empty

User's Guide: Chapter 6

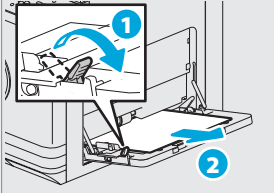


Paper misfeed

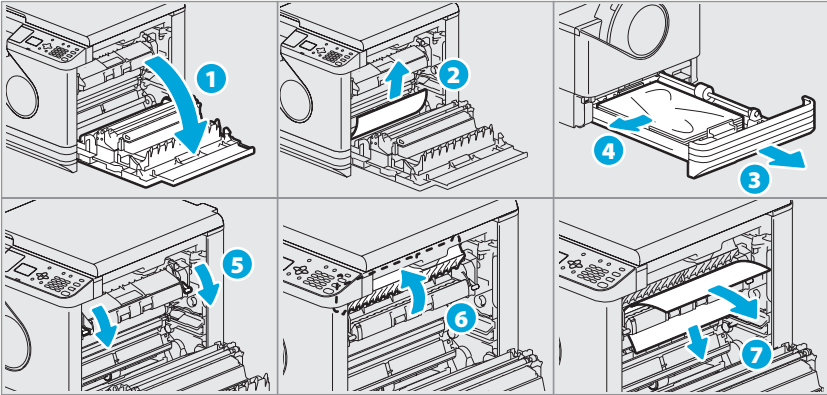
User's Guide: Chapter 6



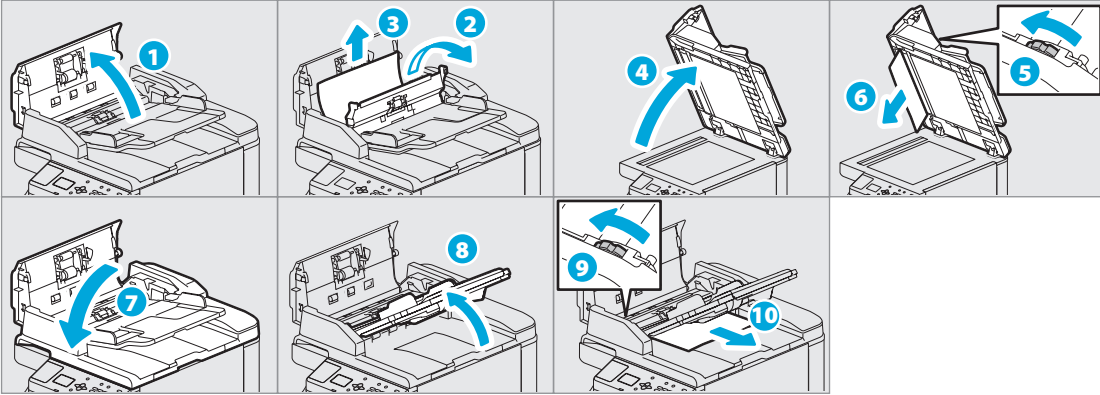
On Bypass tray



In Side cover



In ADF

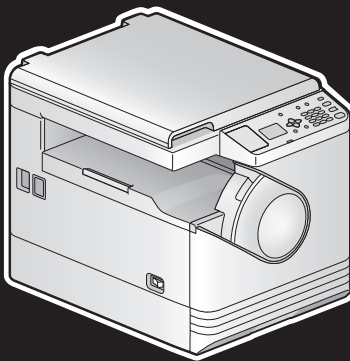


TOSHIBA  
Leading Innovation >>>

MULTIFUNCTIONAL DIGITAL SYSTEMS

e-STUDIO2505

Quick Guide



This manual describes the components, preparations, basic operations, and troubleshooting for the equipment. **Before using the equipment, read the Safety Information (Printouts). The DVD contains this Quick Guide in other languages.**

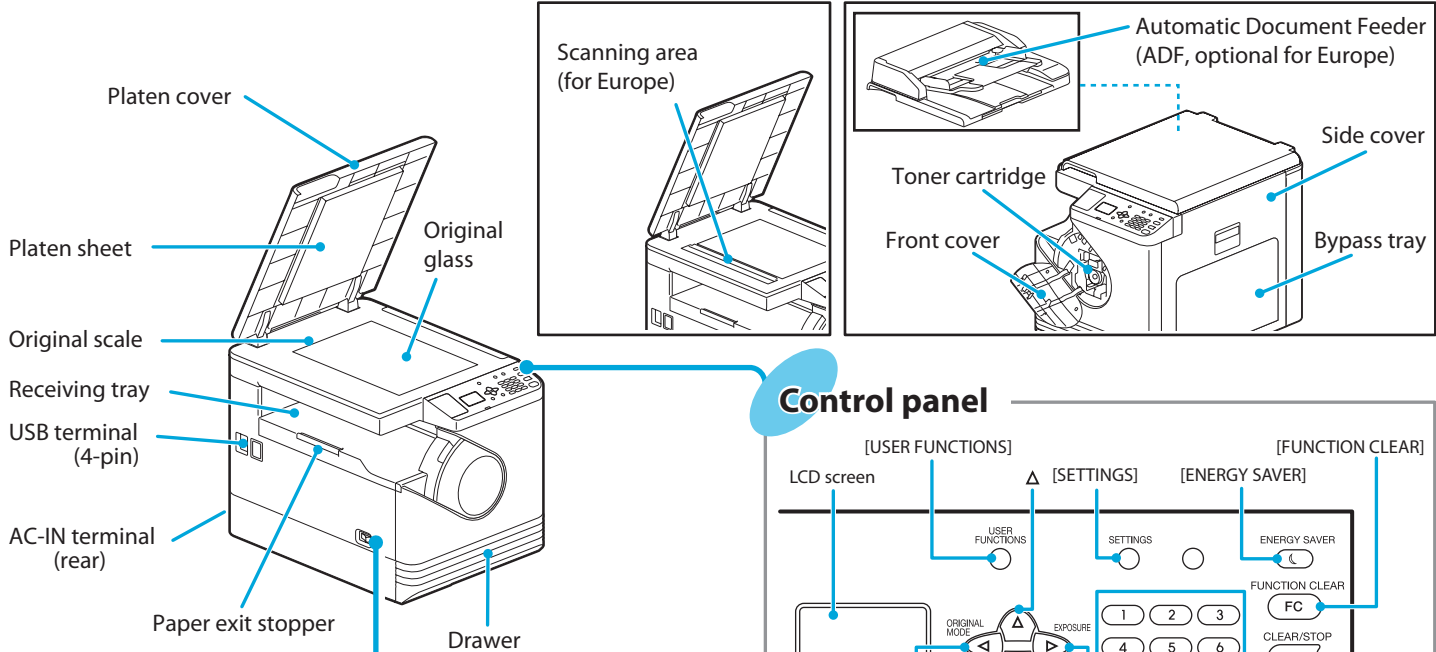
Trademarks

Company names and product names in this manual are the trademarks of their respective companies.

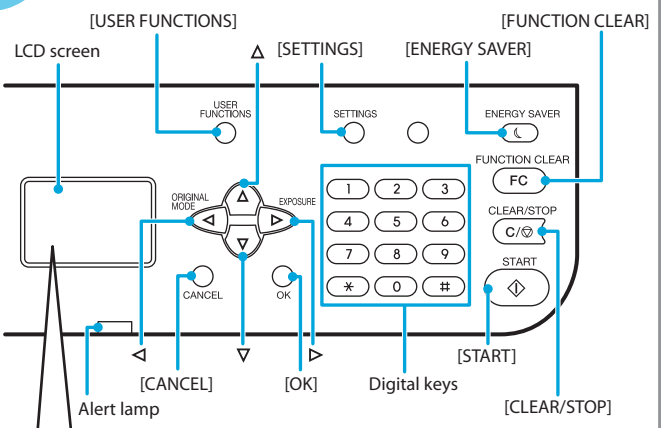
Component Description

Equipment

User's Guide: Chapter 1



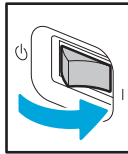
Control panel



Power switch

Turning on

Press the power switch to "I" (on).

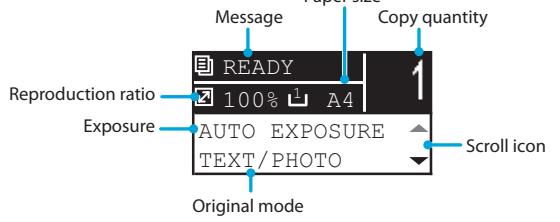


Turning off

Press the power switch to "O" (off).



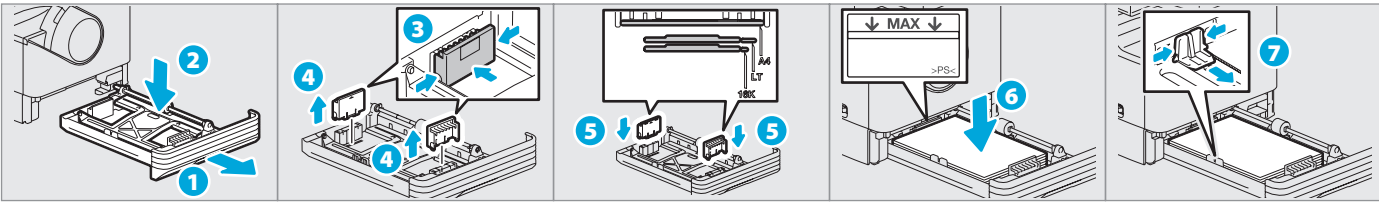
Main screen (Copy)



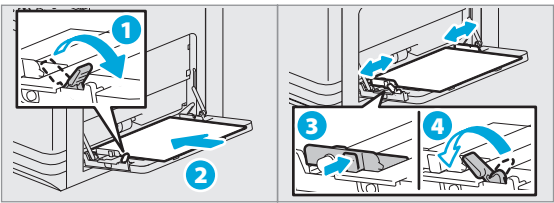
Loading paper

User's Guide: Chapter 1

Drawer



Bypass tray



To set paper size of Drawer

When you load paper in the drawer, a pop-up window appears. Follow the instructions and set the paper size. (When the "POP UP" function is set to "ENABLE".)

To print on an A3 (LD) page

Load paper in the bypass tray, and follow the pop-up instructions to set the paper size and paper type.

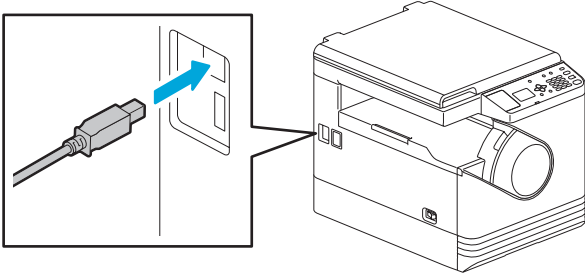
Driver installation

Software Installation Guide: Chapter 2

Installing the driver requires the administrator authority. For Windows 7, Windows 8, Windows Server 2008 R2, or Windows Server 2012, use the installer.

Connecting computer

Before installing the drivers, connect the equipment and the computer with a USB cable.



Note when installing from installer

- Close all running applications.
- If the installer does not automatically start, double-click "Setup.exe" in the DVD.

Using installer

- Make sure that the equipment is turned off.
- Insert the DVD into the computer.
- Follow the on-screen instructions.

Using Plug and Play

- Turn on the equipment.
- Follow the on-screen instructions.

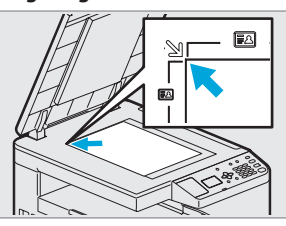
Printer and scanner functions are available.

Copier

User's Guide: Chapter 2

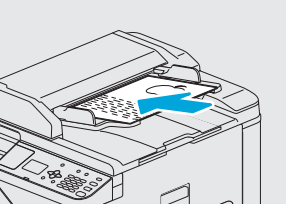
1. Place the original(s).


Original glass



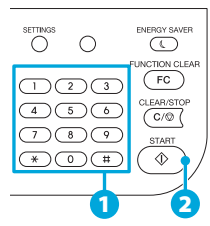
2. Make the copy settings.

ADF





3. Enter the number of copies with the digital keys 1, and then press [START] 2 to copy.



To stop copying

Press [CLEAR/STOP]

To reset settings and LCD screen after copying

Press [FUNCTION CLEAR]

Shortcut keys

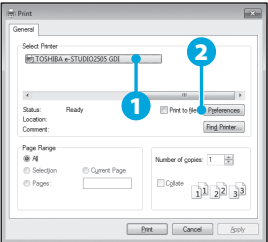
Press <: "ORIGINAL MODE"

Press >: Europe and the Americas "EXPOSURE", Except Europe and the Americas "ID CARD"

Printer

User's Guide: Chapter 3

- Select [Print] from the application's [File] menu.
- Select your printer 1, and then click [Preferences] 2.
- Make print option settings, and then click [OK].
- Click [Print] ([OK]).



Scanner

User's Guide: Chapter 4

- Place the original(s).
- Launch a TWAIN-compliant application.
- Select the device from the application's [File] menu.
- Select the menu to scan from the application's [File] menu.
- Make the scan settings, and then click [Scan].